



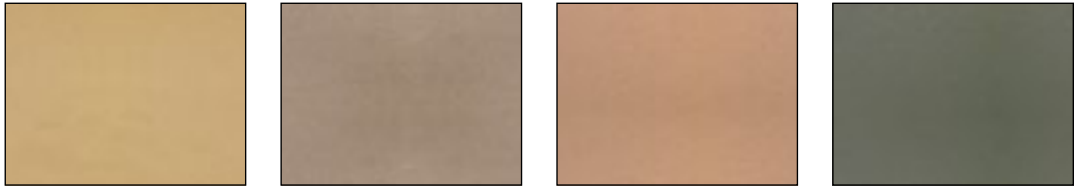
BUILDING VALUE SINCE 1906



**SOLID COLOR REINFORCED COMPOSITE (SCRC)\***

MATERIAL DESCRIPTION: DYED WOOD FIBROUS MATERIAL REINFORCED WITH POLYCARBONATE AND PHENOLIC RESINS FOR SOLID COLOR CLEAR THROUGH.

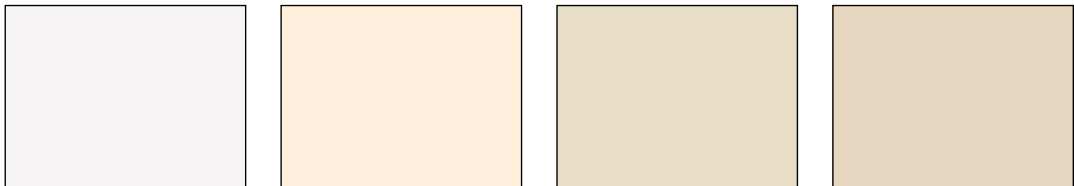
- GOLDEN KHAKI SC01
- DESERT BEIGE SC02
- TERRA COTTA SC03
- FOREST GREEN SC04



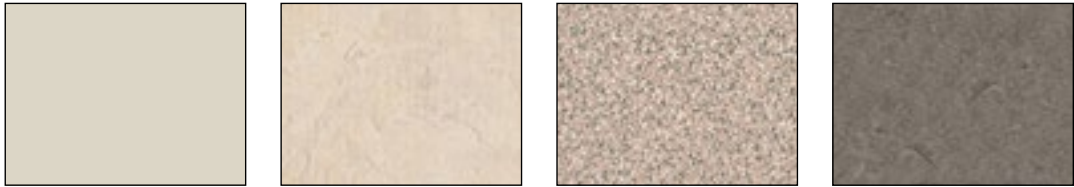
**COMPACT LAMINATE (SOLID PHENOLIC)†**

MATERIAL DESCRIPTION: MULTIPLE LAYERS OF RESIN-IMPREGNATED KRAFT PAPER WITH COLOR AND CLEAR ULTRA HARD MELAMINE SURFACE SHEETS.

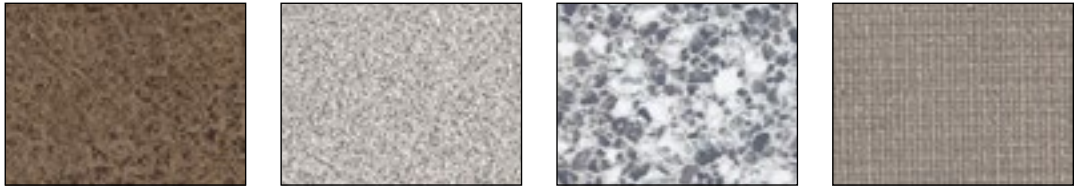
- WHITE 949-58
- ANTIQUE WHITE S-463-CA
- ALMOND S-445-CA
- SAND S-436-CA



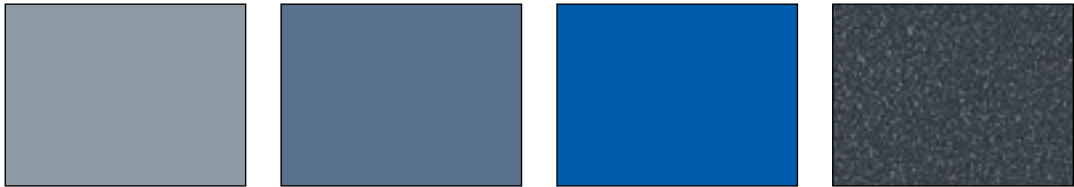
- WILLOW GREY S-431-CA
- NATURAL CANVAS 7022-58
- BEIGE GRIT P-887-CA
- EVENING TIGRIS 4674-60



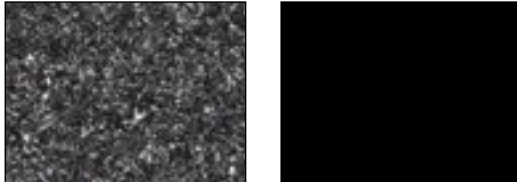
- WESTERN STORM 4872-60
- GREY GRIT P-886-CA
- FLINT CRYSTALL 3518-58
- PEWTER MESH 4878-60



- LIMOUSINE GREY S-542-CA
- DENIM BLUE S-513-CA
- SPECTRUM BLUE 851-58
- GRAPHITE GRAFIX 515-58



- BLACK STAR P-500-CA
- BLACK 909-58



ARBORITE®

Wilsonart



TRESPA  
(SCRC)



**10-DAY RAPID RESPONSE PROGRAM.‡**

- 25 COMPARTMENTS OR LESS • SHIP WITHIN 10 DAYS OR LESS AFTER ORDER APPROVAL AT NO EXTRA CHARGE
- ALL STANDARD COLORS • HUNDREDS OF OTHER COLORS ARE AVAILABLE IN COMPACT LAMINATE; ADDITIONAL LEAD TIME WILL APPLY, PLEASE CONSULT ARBORITE, FORMICA, TRESPA AND WILSONART FOR COLOR OPTIONS

COLORS ARE PRINTED REPRODUCTION AND ARE FOR DESCRIPTIVE PURPOSES ONLY. REFER TO MANUFACTURERS' SAMPLES FOR ABSOLUTE COLOR FIDELITY. COLOR GUIDES AND SAMPLES ARE AVAILABLE FROM BOBRICK ON REQUEST.

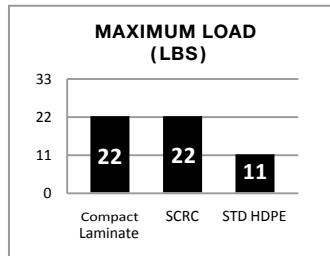
\* SCRC MINOR EDGE NICKS AND RANDOM COLOR VARIATIONS ARE NORMAL CONSEQUENCES OF MANUFACTURING MATERIAL CONTAINING NATURAL FIBERS. MATERIAL CAN VARY IN COLOR BETWEEN THICKNESSES AND PRODUCTION BATCHES. WHERE COLOR CONSISTENCY IS CRITICAL, COMPACT LAMINATE 1080 DURALINE SERIES IS RECOMMENDED. DISCOLORATION OF THE EDGES MAY OCCUR IN ENVIRONMENTS WITH SIGNIFICANT LIGHT EXPOSURE.

† ALL COLORS ARE AVAILABLE IN MATTE FINISH. REFER TO MANUFACTURERS FOR SAMPLES OF OTHER COMPACT LAMINATE PRODUCTS.

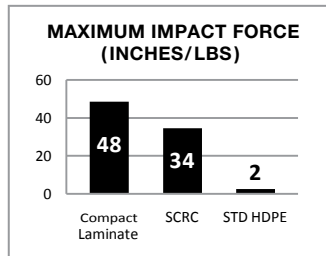
‡ 10-DAY PROGRAM EXCLUDES CLASS A FIRE-RATED 1180 SERIES, GAP-FREE, AND MAXIMUM-HEIGHT PRIVACY OPTIONS.



**ROBUST/VANDAL-RESISTANT**

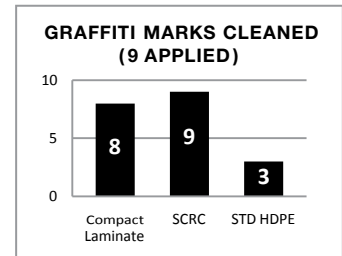


**SCRATCH RESISTANCE\***



**IMPACT RESISTANCE\***

\*PER ASTM TEST METHODOLOGY, RESULTS ON FILE.



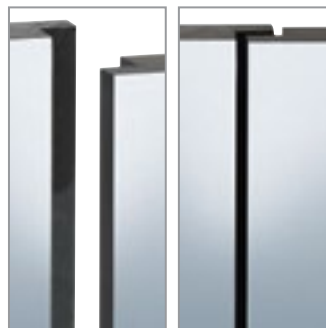
**GRAFFITI RESISTANCE\***



**INTEGRATED PRIVACY/SUPERIOR FIT AND FINISH**



**STANDARD CONCEALED HARDWARE**



**GAP-FREE INTERLOCKING DOORS AND STILES**



**MAXIMUM-HEIGHT**



**FIRE CODE/ACCESSIBILITY**

- MEETS THE MOST CURRENT FIRE CODE REQUIREMENTS (ASTM E 84 INTERIOR WALL FINISH).
- ADA COMPLIANCE: OPERABLE WITH ONE HAND, WITHOUT TIGHT GRASPING, PINCHING OR TWISTING OF THE WRIST, AND WITHOUT EXCEEDING FIVE POUNDS OF FORCE.
- REFER TO BULLETINS TB-73 AND TB-90, AND BOBRICK'S PLANNING GUIDE FOR ACCESSIBLE RESTROOMS.
- ALL BOBRICK REFERENCE MATERIALS ARE AVAILABLE FOR DOWNLOAD ON BOBRICK.COM.

**FEATURES/BENEFITS SUMMARY**

- **DURABLE:** ENGINEERED AND FABRICATED FOR YEARS OF SERVICE, BACKED BY A 25-YEAR WARRANTY.
- **EXPEDITED SHIPMENTS:** 10-DAY OR LESS RAPID RESPONSE PROGRAM MEETS CUSTOMER DEADLINES.
- **MOISTURE-RESISTANT:** WITHSTANDS WET ENVIRONMENTS AND HOSE-DOWN MAINTENANCE.
- **COMPLIANT:** MEETS FIRE CODE PUBLIC SAFETY REQUIREMENTS AND ADA ACCESSIBILITY GUIDELINES.
- **ROBUST HARDWARE:** FACTORY-INSTALLED THREADED INSERTS AND OPTIONAL FULL-HEIGHT HARDWARE.
- **FLEXIBLE:** CHOICE OF FOUR MOUNTING CONFIGURATIONS MEET A VARIETY OF INSTALLATION NEEDS.
- **PRIVACY:** OPTIONAL GAP-FREE DOORS/STILES AND FULL-HEIGHT PANELS ELIMINATE SIGHT LINES.

